

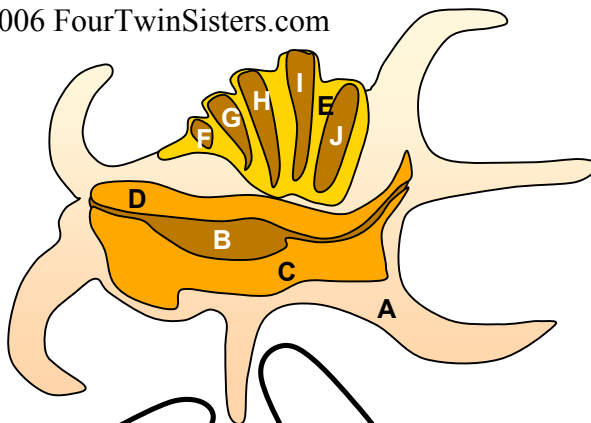
Barter Pattern:

If you like this pattern please send some used postage stamps or a small amount of fabric to:

Annette Truong PO Box 111104 Campbell CA 95011 USA

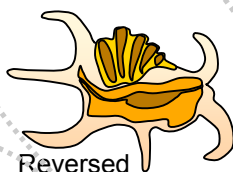


© 2006 FourTwinSisters.com



Instructions:

This pattern will work best with fusible web appliqué. Add seam allowances (and reverse) for regular appliqué. No allowances for fusible appliqué. Cut 1 each of piece and loosely assemble pieces before appliqué. Place pieces in alphabetical order: A,B,C... etc. Grey dotted lines indicate pieces that go on top.



Spiny Shell 2

By Margaret Huynh

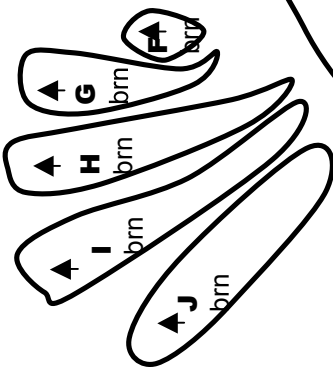
© 2006 FourTwinSisters.com

A Lt
nearh

D Or.

C orange

B brow n



E yello w



Email us a picture of your finished block and we'll send you a fat quarter!

Important tip: Cut the paper pieces and tape them together using the grey dotted lines for alignment. This is now the full-size placement guide (reversed).

Colors: Hot pink, black, and grey.