

Fancy Rose Lamp by Margaret Huynh

© 2006 Fourtwinsisters.com

Instructions:

This pattern will work best with fusible web appliqué. Add seam allowances for regular appliqué, no allowances for fusible appliqué. Cut 1 of each piece. Loosely assemble pieces before appliqué. Grey dotted lines indicate pieces that go on top. Place pieces in order alphabetically (A, B, C, etc). Embroider or ink small details.

Important tip: To help in placement of pieces, cut out the paper pieces and tape them together using the grey dotted lines as guides. Lay this full-size paper template face down on the background fabric and trace lightly around the exterior with a pencil or washable fabric marker. Loosely assemble pieces so they fit inside the marking for more accuracy.

Fabric for Photos: If you send us a digital photograph of one of our quilt blocks that you've sewn, we'll send you a fat quarter. Email your digital photo to annette@fourtwinsisters.com. Details at www.fourtwinsisters.com.

Materials:

100% cotton recommended.

A,B = Dark Brown

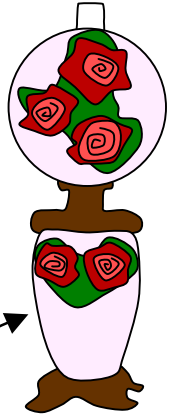
C,E = Pale Pink

D = White

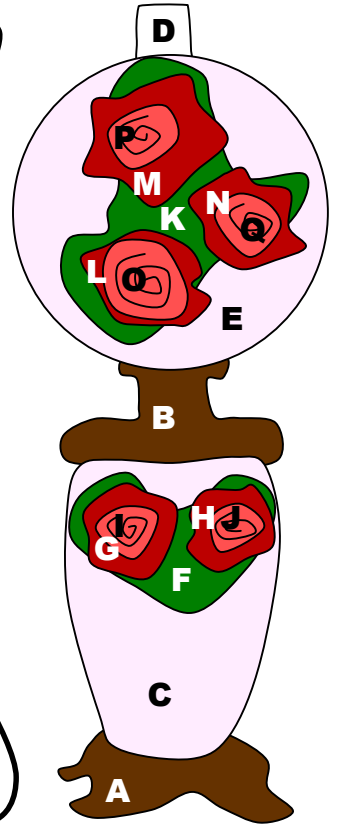
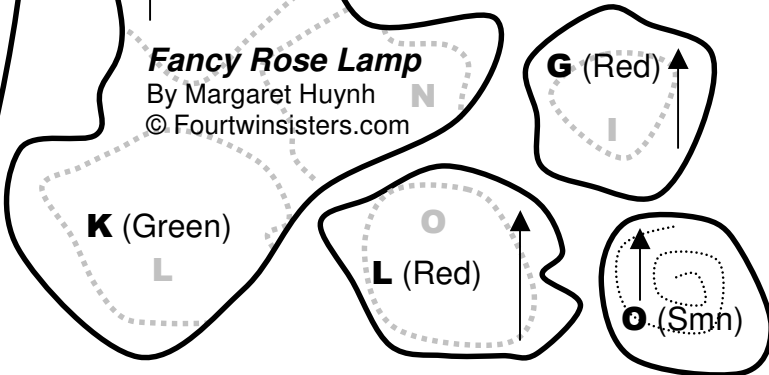
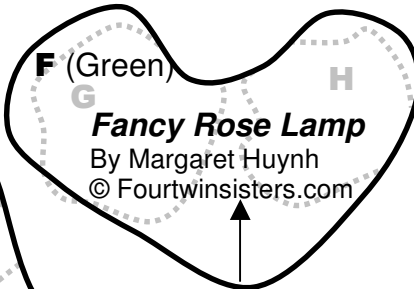
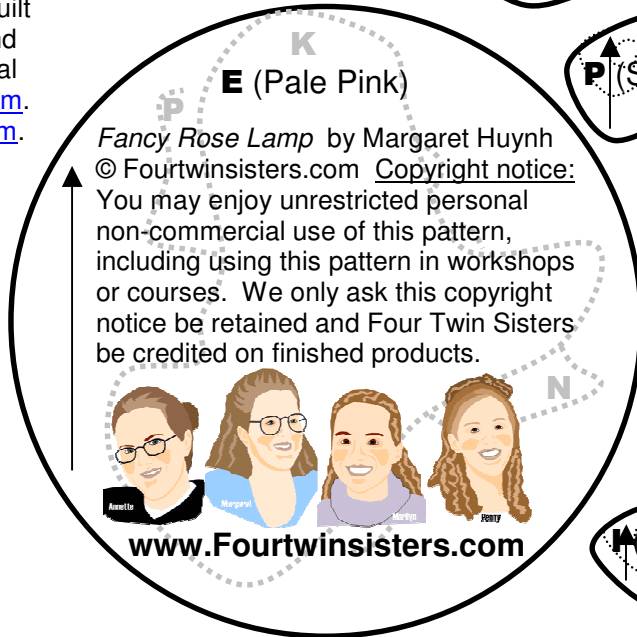
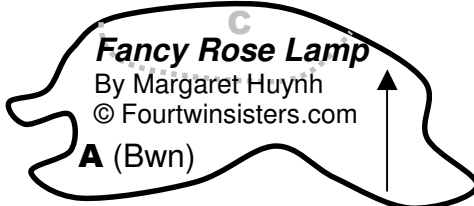
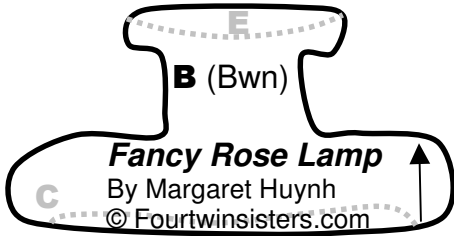
F,K = Green

G,H,L,M,N = Red

I,J,O,P,Q = Salmon



Finished product using fusible web appliqué



For more free patterns visit our website at www.fourtwinsisters.com