

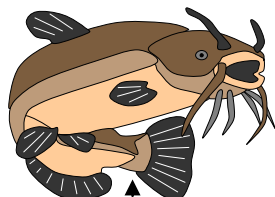
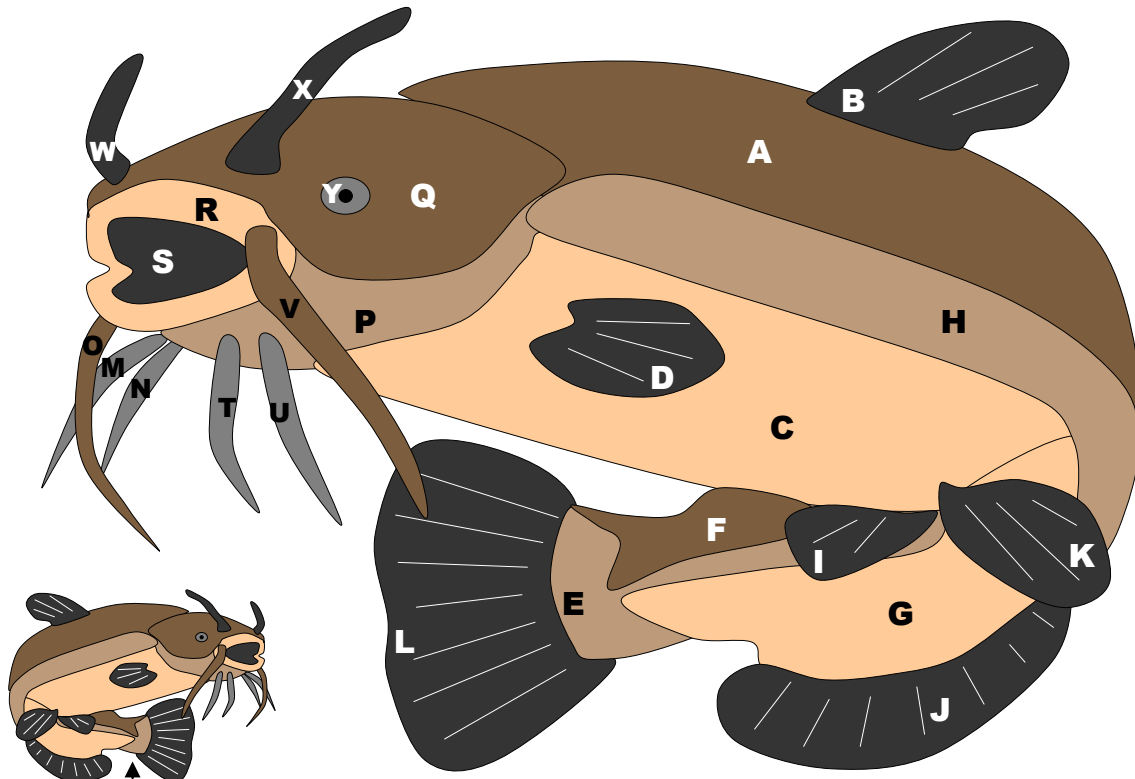


Instructions:

This pattern was made for fusible web. Loosely assemble pieces before ppliqué. Grey dotted lines indicate pieces that go on top. Place pieces in order from A, B, C, ... etc, using the picture as a placement guide.

The large picture shows what the pattern looks like using fusible web.

B1, B2, B3 are dark, med, light brown. G1, G2 are dark and light grey.



This is what the pattern looks like when reversed (non-fusible web).

